

Human TSLP (R127A, R130A) Protein

Cat. No. TSP-HM402

Description

Source	Recombinant Human TSLP (R127A, R130A) Protein is expressed from HEK293 with His tag and Avi tag at the C-Terminus. It contains Tyr29-Gln159(R127A,R130A).
Accession	Q969D9-1
Molecular Weight	The protein has a predicted MW of 17.7 kDa. Due to glycosylation, the protein migrates to 25-35 kDa based on Bis-Tris PAGE result.
Endotoxin	Less than 1EU per µg by the LAL method.
Purity	> 95% as determined by Bis-Tris PAGE > 95% as determined by HPLC

Formulation and Storage

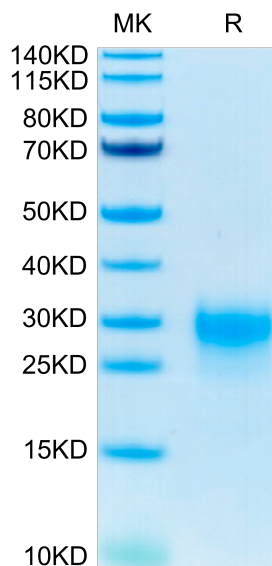
Formulation	Lyophilized from 0.22µm filtered solution in PBS (pH 7.4). Normally 8% trehalose is added as protectant before lyophilization.
Reconstitution	Centrifuge the tube before opening. Reconstituting to a concentration more than 100 µg/ml is recommended. Dissolve the lyophilized protein in distilled water.
Storage	-20 to -80°C for 12 months as supplied from date of receipt. -80°C for 3 months after reconstitution. Recommend to aliquot the protein into smaller quantities for optimal storage. Please minimize freeze-thaw cycles.

Background

Thymic Stromal Lymphopoietin (TSLP) was originally identified as an activity from the conditioned medium of a mouse thymic stromal cell line that promoted the development of B cells. Cytokine that induces the release of T-cell-attracting chemokines from monocytes and, in particular, enhances the maturation of CD11c dendritic cells. Can induce allergic inflammation by directly activating mast cells.

Assay Data

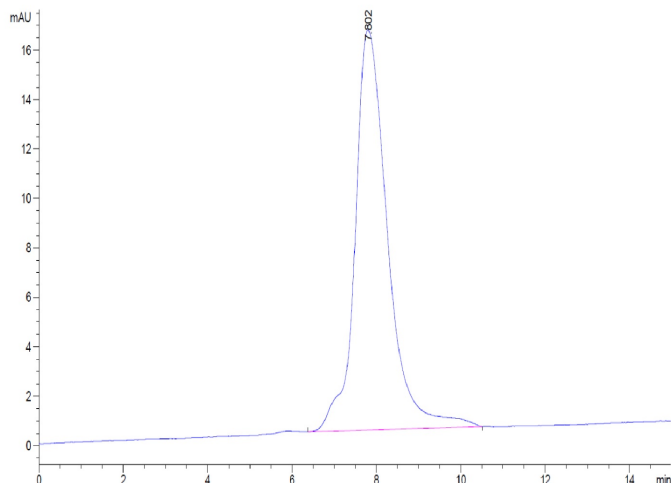
Bis-Tris PAGE



Human TSLP (R127A, R130A) on Bis-Tris PAGE under reduced condition. The purity is greater than 95%.

SEC-HPLC

Assay Data

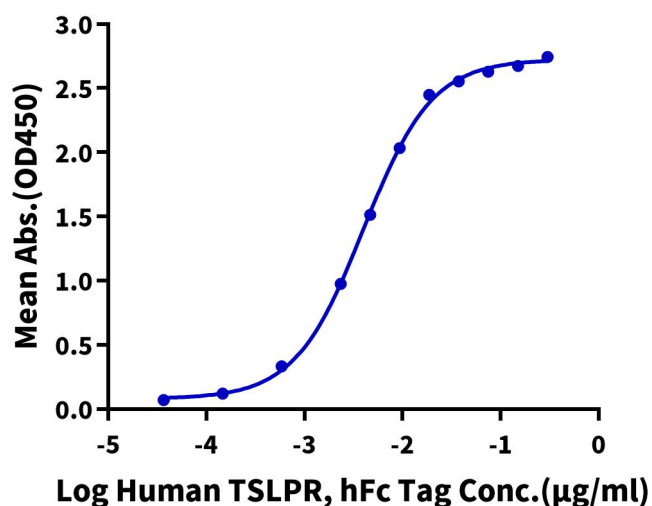


The purity of Human TSLP (R127A, R130A) is greater than 95% as determined by SEC-HPLC.

ELISA Data

Human TSLP (R127A, R130A), His Tag ELISA

0.2µg Human TSLP (R127A, R130A), His Tag Per Well

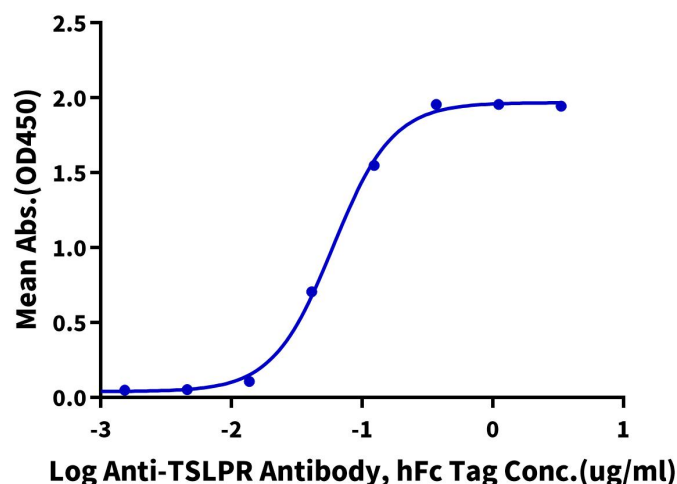


Immobilized Human TSLP (R127A, R130A), His Tag at 2µg/ml (100µl/Well). Dose response curve for Human TSLPR, hFc Tag with the EC50 of 4.0ng/ml determined by ELISA (QC Test).

ELISA Data

Human TSLP (R127A, R130A), His Tag ELISA

0.05ug Human TSLP (R127A, R130A), His Tag Per Well



Immobilized Human TSLP (R127A,R130A), His Tag at 0.5µg/ml (100µl/Well). Dose response curve for Anti-TSLPR Antibody, hFc Tag with the EC50 of 62.6ng/ml determined by ELISA.